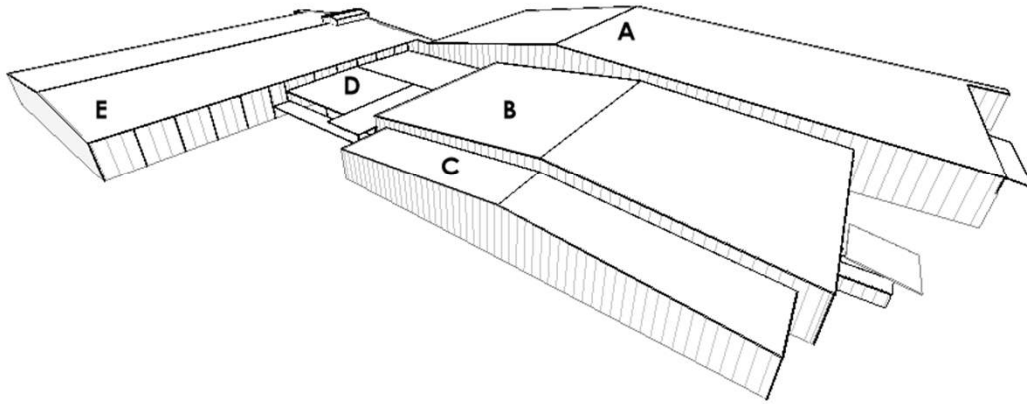
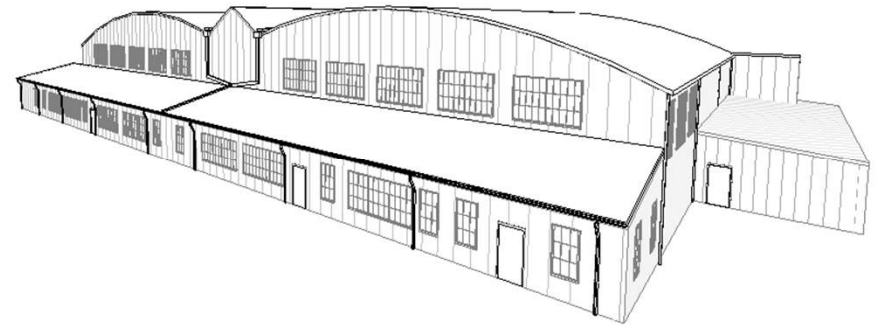


EMBRAER ROOF REPLACEMENT & RETROFIT ROOF, HANGAR B MACON



EMBRAER



WWII HANGAR B

AGENDA

- INTRODUCTIONS & PROJECT LOCATION
- PROJECT COMPONENTS & DESCRIPTIONS
- CONTRACT TIME
- PROJECT SCHEDULE
- MISCELLANEOUS CONTRACT REQUIREMENTS
- CLARIFICATIONS & INTERPRETATIONS
- QUESTIONS & COMMENTS AT THIS TIME
- SITE VISIT

PASSERO
architecture engineering



INTRODUCTIONS

OWNER: MIDDLE GEORGIA REGIONAL AIRPORT

Doug Faour, Aviation Director
Heather Lowe, Airport Manager
Louis Storms, FBO Manager

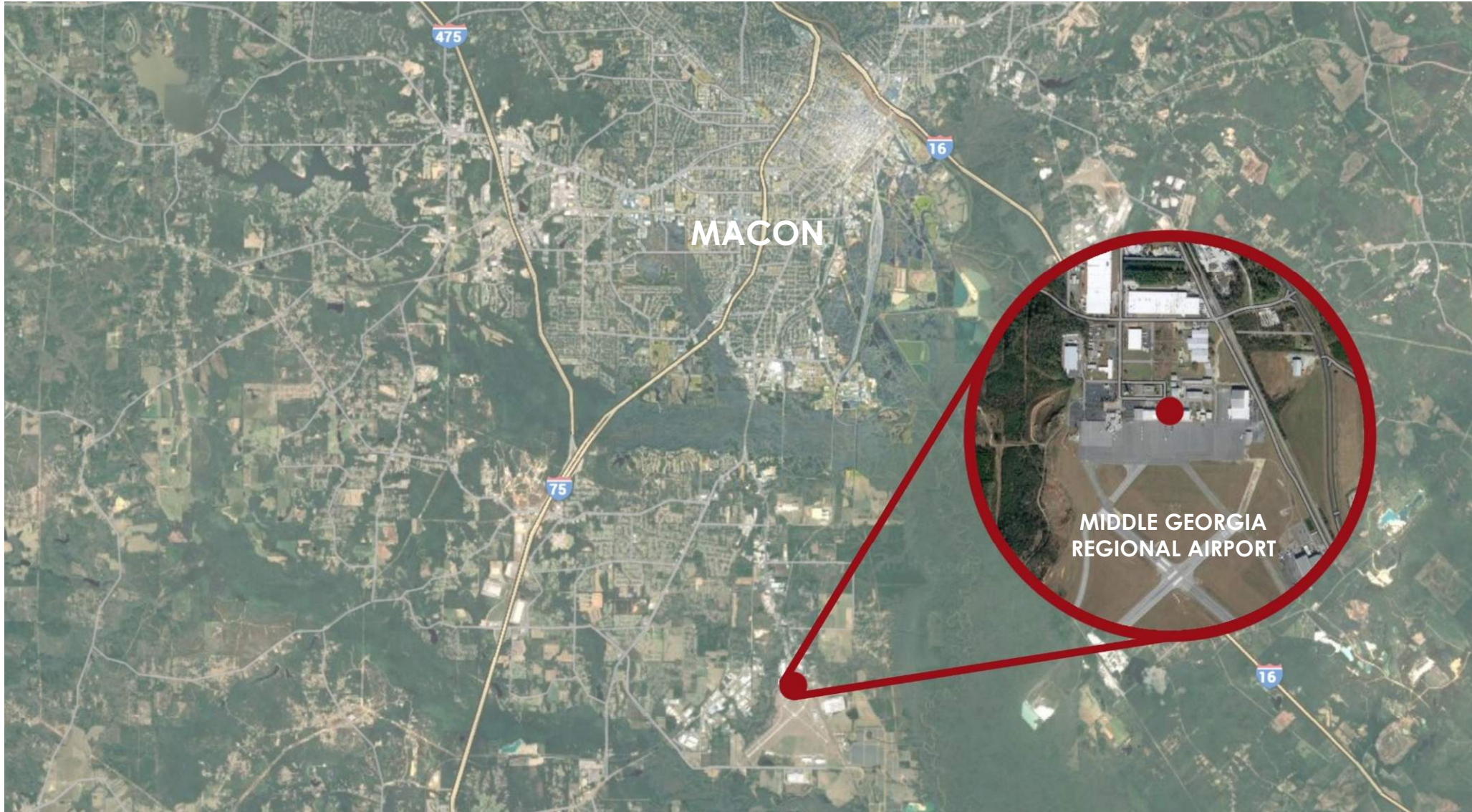
ENGINEERING AND ARCHITECTURAL CONSULTANT: PASSERO ASSOCIATES

Justin Vollenweider, Project Manager
Steven Kushner, AIA, Senior Project Architect
Christa Pineda, Architectural Designer II

PASSERO
architecture engineering



PROJECT LOCATION



2178 FLIGHTLINE AVE, MACON, GEORGIA 31297

PROJECT COMPONENTS – BID PACKAGE OVERVIEW



AIRPORT MAP

EXISTING CONDITIONS



WWII HANGAR B



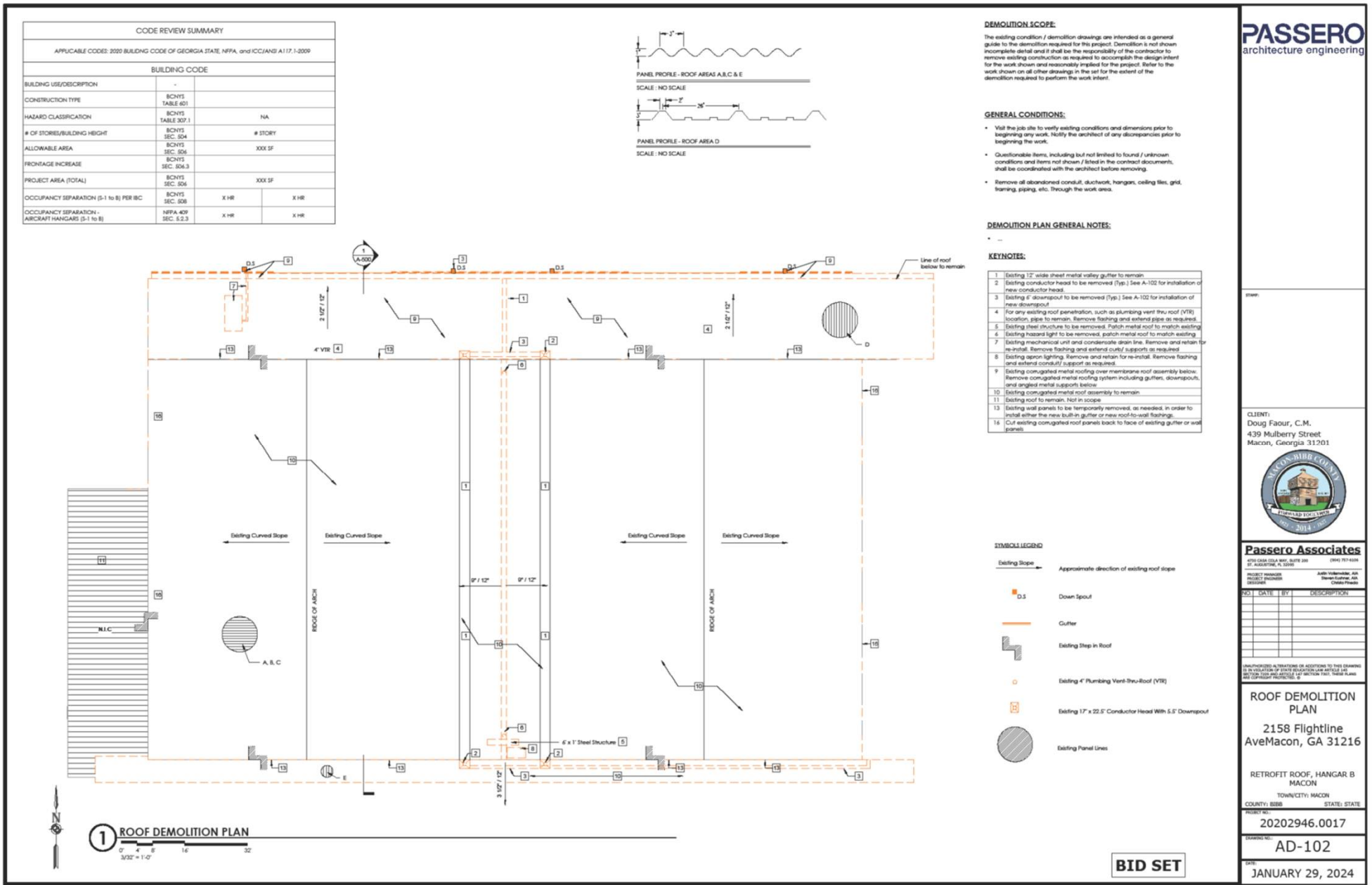
EMBRAER

WWII HANGAR B

PASSERO
architecture engineering



PROJECT COMPONENTS – BID PACKAGE OVERVIEW



WWII ROOF PLAN - DEMO

NOT ALL COMPONENTS RELATED TO BID PACKAGE ARE SHOWN

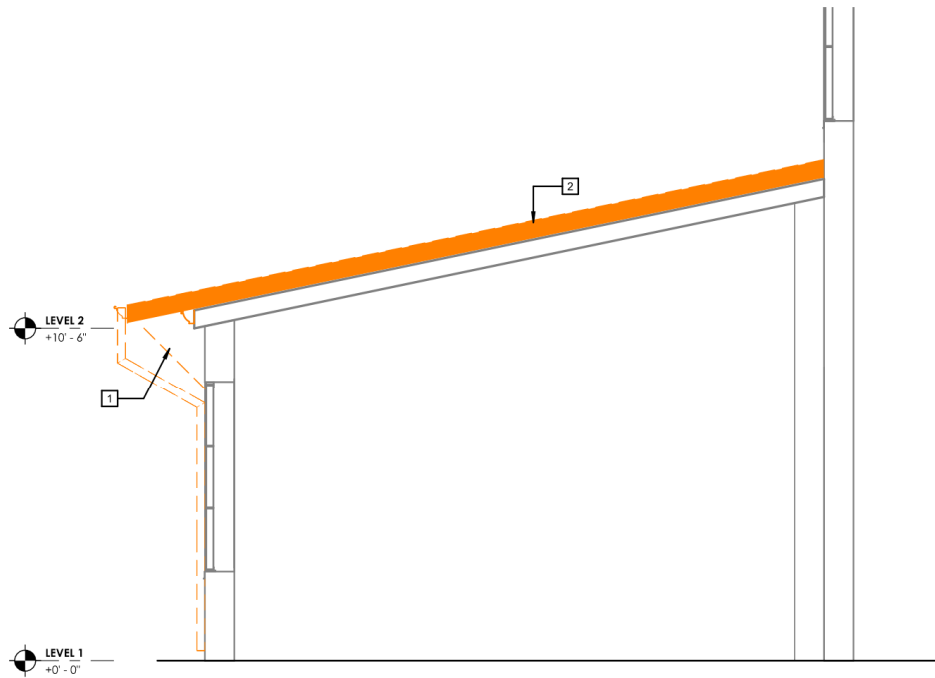
PROJECT COMPONENTS – BID PACKAGE OVERVIEW



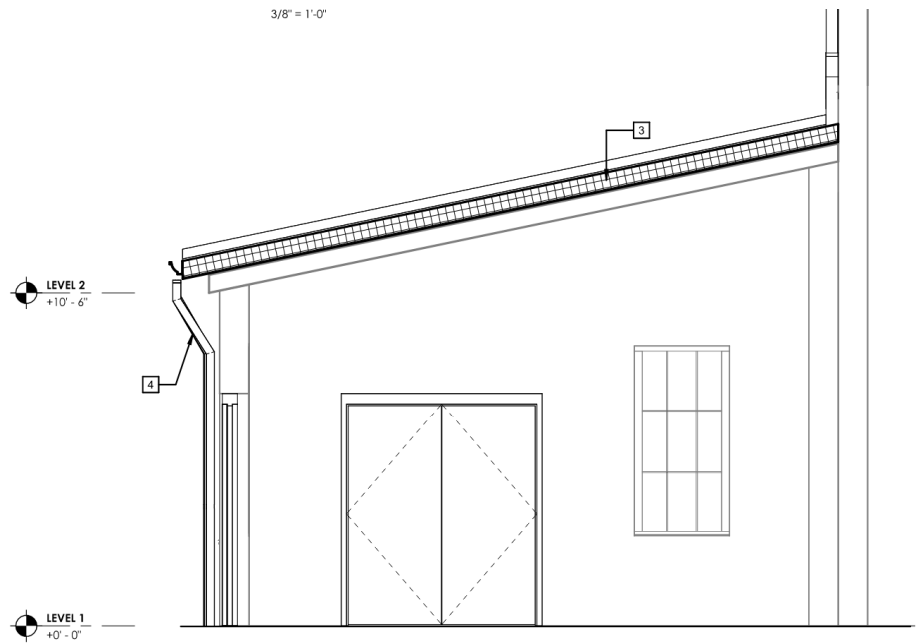
WWII - EXISTING IMAGES

NOT ALL COMPONENTS RELATED
TO BID PACKAGE ARE SHOWN

PROJECT COMPONENTS – BID PACKAGE OVERVIEW



1 EAST SECTION DEMOLITION

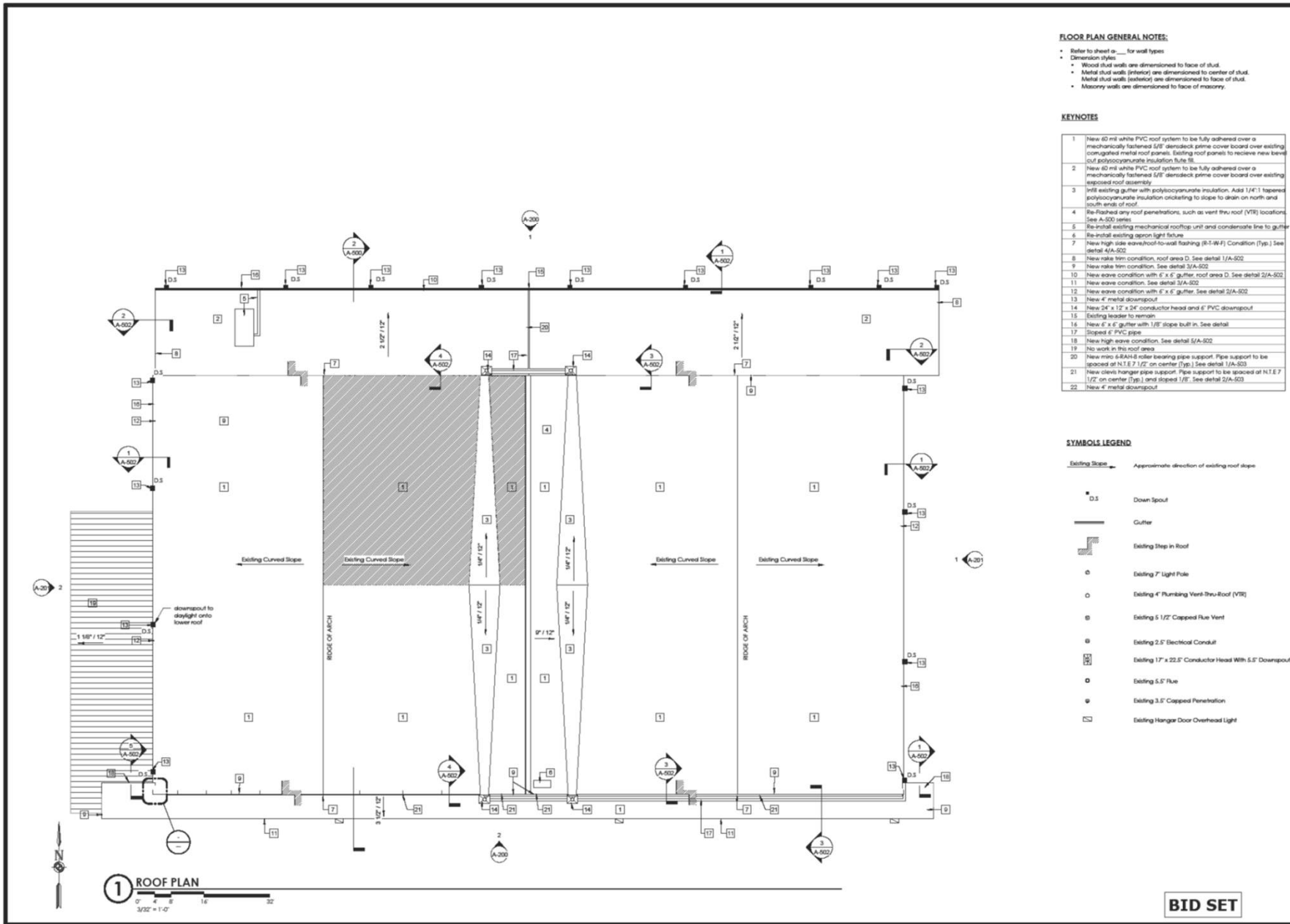


2 EAST SECTION NEW CONSTRUCTION

WWII – LOW ROOF

NOT ALL COMPONENTS RELATED
TO BID PACKAGE ARE SHOWN

PROJECT COMPONENTS – BID PACKAGE OVERVIEW



FLOOR PLAN GENERAL NOTES:

- Refer to sheet _____ for wall types
- Dimension styles
- Wood stud walls are dimensioned to face of stud.
- Metal stud walls (interior) are dimensioned to center of stud.
- Metal stud walls (exterior) are dimensioned to face of stud.
- Masonry walls are dimensioned to face of masonry.

KEYNOTES

- 1 New 60 mil white PVC roof system to be fully adhered over a mechanically fastened 5/8" deniteck prime cover board over existing corrugated metal roof panels. Existing roof panels to receive new bonded polyisocyanurate insulation R=16.
- 2 New 60 mil white PVC roof system to be fully adhered over a mechanically fastened 5/8" deniteck prime cover board over existing exposed roof assembly.
- 3 Install existing gutter with polyisocyanurate insulation. Add 1/4" tapered polyisocyanurate insulation celloclating to slope to drain on north and south ends of roof.
- 4 Re-flash any roof penetrations, such as vent thru roof (VTR) locations. See A-500 series.
- 5 Re-install existing mechanical rooftop unit and condensate line to gutter.
- 6 Re-install existing apron light fixture.
- 7 New high side eave/roof-to-wall flashing (R-T-W-F) Condition (Typ.) See detail A/A-502.
- 8 New rake trim condition, roof area D. See detail 1/A-502.
- 9 New rake trim condition. See detail 2/A-502.
- 10 New eave condition with 6" x 6" gutter, roof area D. See detail 2/A-502.
- 11 New eave condition. See detail 3/A-502.
- 12 New eave condition with 6" x 6" gutter. See detail 2/A-502.
- 13 New 4" metal downspout.
- 14 New 24" x 12" x 24" conductor head and 6" PVC downspout.
- 15 Existing leader to remain.
- 16 New 6" x 6" gutter with 1/8" slope built in. See detail.
- 17 Sloped 4" PVC pipe.
- 18 New high eave condition. See detail 5/A-502.
- 19 No work in this roof area.
- 20 New micro-S-BAND roller seating pipe support. Pipe support to be spaced at N.T.E 7 1/2' on center (Typ.) See detail 1/A-503.
- 21 New clevis hanger pipe support. Pipe support to be spaced at N.T.E 7 1/2' on center (Typ.) and sloped 1/8". See detail 2/A-503.
- 22 New 4" metal downspout.

SYMBOLS LEGEND

- Existing Slope → Approximate direction of existing roof slope
- D.S. Down Spout
- Gutter
- Existing Step in Roof
- Existing 7' Light Pole
- Existing 4" Plumbing Vent-Thru-Roof (VTR)
- Existing 5 1/2" Capped Rue Vent
- Existing 2.5" Electrical Conduit
- Existing 17" x 22.5" Conductor Head With 5.5" Downspout
- Existing 5.5" Rue
- Existing 3.5" Capped Penetration
- Existing Hanger Door Overhead Light

PASSERO
architecture engineering

CLIENT:
Doug Faour, C.M.
439 Mulberry Street
Macon, Georgia 31201



Passero Associates

2705 GALE COLA AVE., SUITE 200 (ONE) 781-6108
47 ADAMS ST., SUITE 100 (TWO) 781-6108
PROJECT MANAGER: Julie Videmeyer, AIA
PROJECT ENGINEER: Steven Luther, AIA
DESIGNER: Chad Franks

NO.	DATE	BY	DESCRIPTION

UNREGISTERED ARCHITECTURE OR ADDITION TO THIS DRAWING IS IN VIOLATION OF STATE REGULATION LAW AND/OR LOCAL ORDINANCES AND MAY BE SUBJECT TO PENALTY. THESE PLANS ARE COPYRIGHT PROTECTED. ©

ROOF PLAN

2158 Flightline
AveMacon, GA 31216

RETROFIT ROOF, HANGAR B
MACON

TOWN/CITY: MACON
COUNTY: BIBB STATE: GEORGIA

PROJECT NO:
20202946.0017

DRAWING NO:
A-102

DATE:
JANUARY 29, 2024

BID SET

WWII ROOF PLAN

NOT ALL COMPONENTS RELATED
TO BID PACKAGE ARE SHOWN

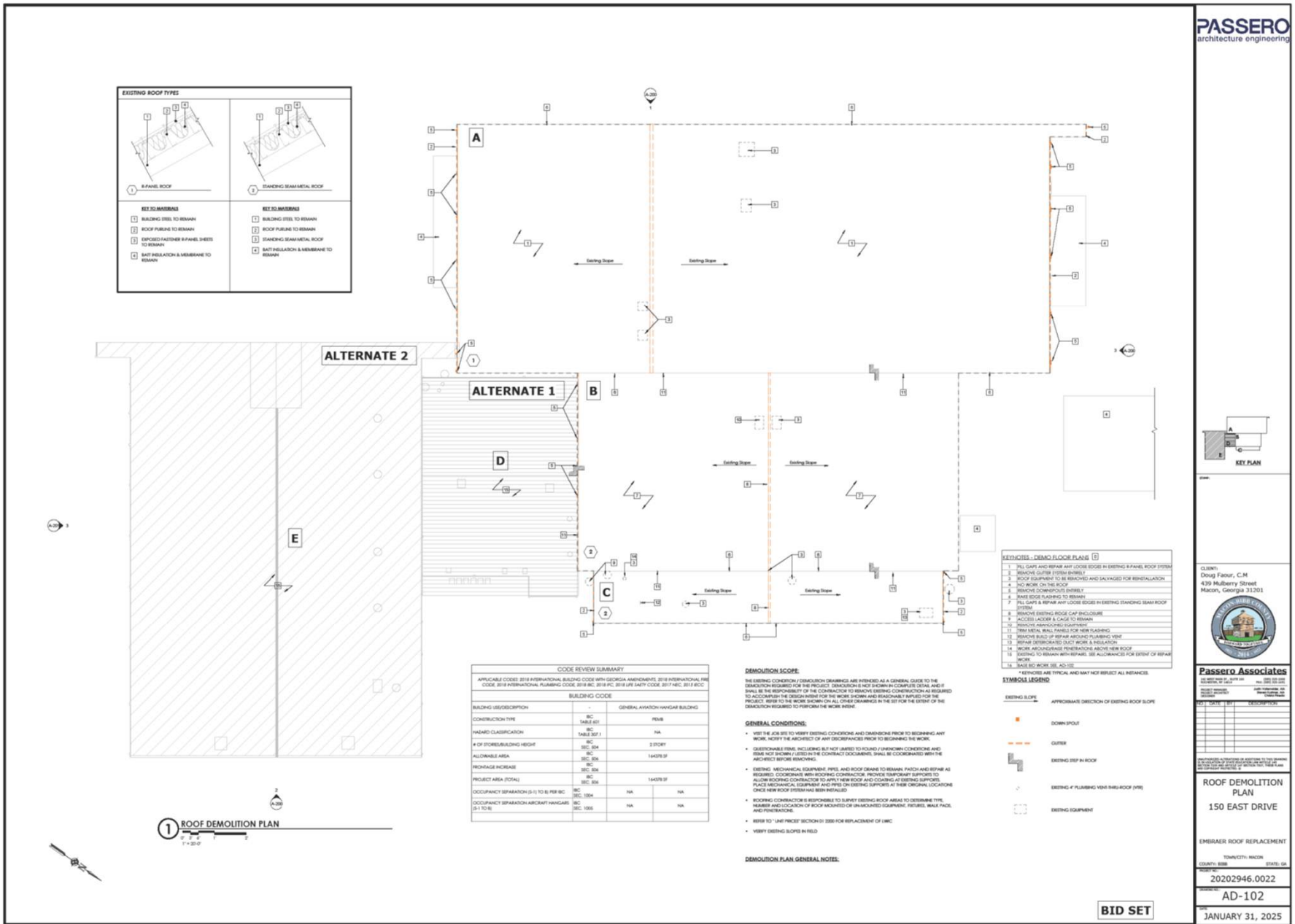
PROJECT COMPONENTS – BID PACKAGE OVERVIEW

EMBRAER

PASSERO
architecture engineering



PROJECT COMPONENTS – BID PACKAGE OVERVIEW



EMBRAER ROOF PLAN - DEMO

NOT ALL COMPONENTS RELATED TO BID PACKAGE ARE SHOWN

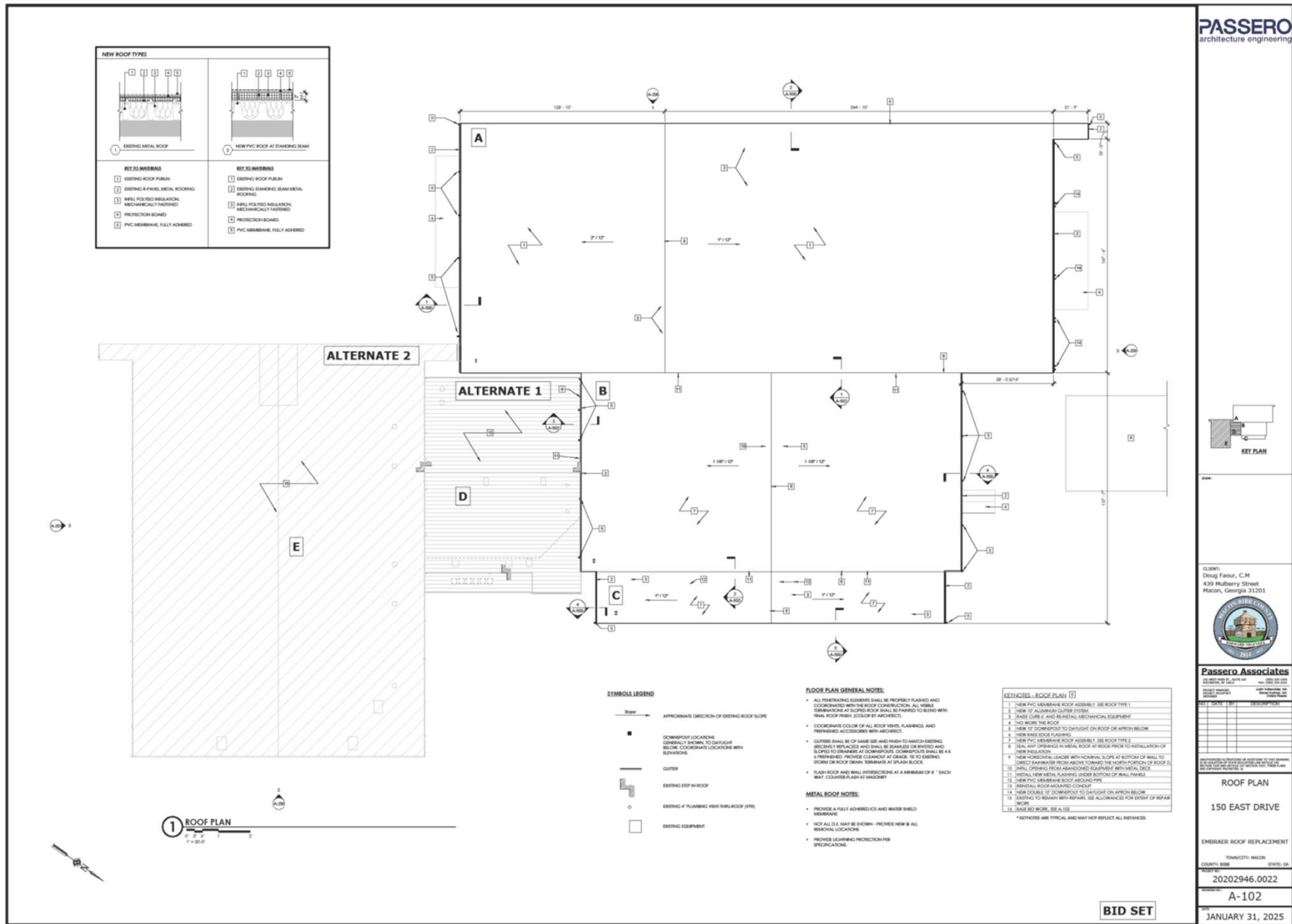
PROJECT COMPONENTS – BID PACKAGE OVERVIEW



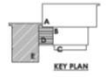
EMBRAER - EXISTING IMAGES

NOT ALL COMPONENTS RELATED
TO BID PACKAGE ARE SHOWN

PROJECT COMPONENTS – BID PACKAGE OVERVIEW



PASSERO
 architecture engineering



CLIENT:
 Embraer, C-14
 430 Mulberry Street
 Marietta, Georgia 31201



Passero Associates

NO.	DATE	BY	DESCRIPTION

PROFESSIONAL SEAL OF THE STATE OF GEORGIA

ROOF PLAN

150 EAST DRIVE

EMBRAER ROOF REPLACEMENT

TOWN/CITY: MARIETTA, GA

COUNTY: COBB COUNTY, GA

PROJECT NO.: 20202946.0022

DRAWING NO.: A-102

DATE: JANUARY 31, 2025

BID SET

EMBRAER ROOF PLAN

NOT ALL COMPONENTS RELATED TO BID PACKAGE ARE SHOWN

UTILITY OUTAGES AND SHUTDOWN

- MUST STAY SECURED AT ALL TIMES AND BEWARE OF FOREIGN OBJECT DEBRIS DUE TO PROXIMITY TO AIRFIELD
- DO NOT DISRUPT OR SHUT DOWN LIFE SAFETY SYSTEMS, INCLUDING BUT NOT LIMITED TO POWER, DATA, WATER, SEWER AND FIRE ALARM SYSTEM, WITHOUT NOTICE TO OWNER AND AUTHORITIES HAVING JURISDICTION
- LIMIT SHUTDOWN OF UTILITIES TO 4 HOURS AT A TIME, ARRANGED AT LEAST 48 HOURS IN ADVANCE WITH THE OWNER

PASSERO
architecture engineering



PROJECT SCHEDULE

Invitation to Bid Advertisement Plans Available	<u>Non-Mandatory Pre-Bid Meeting</u>	Questions Due	Addendum Issued	Bid Due	Bid Opening
Wednesday, February 12, 2025	Wednesday, February 19, 2025 (1:00 pm)	Thursday, February 27, 2025 by 5:00pm	Thursday, March 6, 2025	Thursday, March 13, 2025 @ 12:00 pm	Thursday, March 13, 2025 (2:00 pm)

ADDENDA

- ALL ADDENDA WILL BE POSTED TO MACON-BIBB COUNTY'S WEBSITE AT www.maconbibb.us/procurement, AT GEORGIA'S DEPARTMENT OF ADMINISTRATIVE SERVICES AT <https://doas.ga.gov/state-purchasing/georgia-procurement-registry-local-governments/gpr-overview> AND AT www.passero.com/bids IT IS THE BIDDERS RESPONSIBILITY TO CHECK THE CITY'S WEBSITE FOR ADDENDA PRIOR TO SUBMITTING THEIR BID.

BID PROPOSALS

- ALL BIDDERS ARE REQUIRED TO COMPLETE & RETURN A COPY OF THE BID SECTION OF THE CONTRACT DOCUMENTS TO MACON-BIBB COUNTY PROCUREMENT DEPARTMENT LOCATED AT **700 POPLAR STREET, 3RD FLOOR, SUITE 308, MACON, GA 31201, UNTIL 12PM ON THURSDAY, MARCH 13, 2025** THEN PUBLICLY OPENED AND READ ALOUD AT 2PM ON THE SAME DAY.

CONTRACT AWARD

- THE OWNER INTENDS TO AWARD THE CONTRACT TO THE LOWEST BIDDER, BUT RESERVES THE RIGHT TO AWARD IN ANY MANNER DEEMED IN HIS SOLE DISCRETION TO BE IN THE OWNER'S BEST INTEREST
- THE OWNER RESERVES THE RIGHT TO WITHHOLD THE AWARD OF THE CONTRACT FOR A PERIOD NOT TO EXCEED **90 CALENDAR DAYS** FROM BID OPENING.

CONTRACT TIME

- 180 CALENDAR DAYS** FROM NOTICE TO PROCEED WITH LIQUID DAMAGES OF **\$1,000 PER CALENDAR DAY** FOR EACH CALENDAR DAY IN EXCESS OF THE CONTRACT TIME.

BID SUBMISSION

- CONTRACTOR SHALL BEGIN NO LATER THAN TEN CALENDAR DAYS FROM ISSUANCE OF NOTICE TO PROCEED; ALL WORK MUST BE COMPLETED **WITHIN 180 CALENDAR DAYS OF NOTICE TO PROCEED.**
- THE BID SUBMITTAL **[1 ORIGINAL COPY (PRINT) AND 1 ELECTRONIC COPY (USB)]** MUST BE DELIVERED TO MACON-BIBB COUNTY PROCUREMENT DEPARTMENT GOVERNMENT CENTER AT

MACON-BIBB COUNTY PROCUREMENT DEPARTMENT GOVERNMENT CENTER
700 POPLAR STREET, 3RD FLOOR, SUITE 308
MACON, GEORGIA 31201

IN A SEALED PACKAGE. INDICATE THE FOLLOWING INFORMATION ON THE OUTSIDE OF THE SEALED ENVELOPE CONTAINING THE BID:

- PROJECT NAME AS STATED ON PAGE ONE OF THE BID FORMS
 - PROJECT NUMBER
 - LOCATION OF AIRPORT
 - BIDDER'S NAME AND ADDRESS
- IF THE BID IS SENT THROUGH THE MAIL OR OTHER DELIVERY SYSTEM, THE SEALED ENVELOPE SHALL BE ENCLOSED IN A SEPARATE ENVELOPE WITH THE NOTATION "BID ENCLOSED FOR (PROJECT NAME)" ON THE FACE THEREOF.

PASSERO
architecture engineering



BID FORM

PASSERO
architecture engineering



MISCELLANEOUS CONTRACT REQUIREMENTS

CONTRACTOR PROJECT SCHEDULING & PROGRESS MEETINGS: THE CONTRACTOR SHALL SUBMIT A CRITICAL PATH METHOD (CPM) SCHEDULE FOR ALL WORK ACTIVITIES, PRIOR TO COMMENCING WORK, AND PROVIDE UPDATES A MINIMUM OF TWICE PER MONTH. ON SITE WEEKLY PROGRESS MEETINGS SHALL BE REQUIRED FOR THE DURATION OF THE PROJECT; THE FREQUENCY MAY BE REDUCED IF APPROVED BY THE ENGINEER/ARCHITECT.

BIDDER QUALIFICATIONS (REQUIREMENT)

- ALL EXHIBITS SHALL BE INCLUDED WITH THE BIDDER'S PROPOSAL FOR THIS PROJECT.
- BIDDERS MUST SUBMIT WITH THE BID SUBMITTAL EVIDENCE OF CAPABILITIES TO COMPLETE THE WORLD WAR II HANGAR B & EMBRAER AIRPORT HANGAR ROOF REPLACEMENTS PROJECT. THIS WILL INCLUDE A REFERENCE LIST OF SIMILAR PROJECTS (SCOPE & SIZE) SUCCESSFULLY COMPLETED IN THE PAST, A REFERENCE LIST, AND EQUIPMENT LIST, A LIST OF SUBCONTRACTORS, AND OTHER INFORMATION REQUESTED BY MACON-BIBB COUNTY. FAILURE TO SUBMIT QUALIFICATION INFORMATION WITH THE BID SUBMITTAL MAY RESULT IN REJECTION OF A BID.

PASSERO
architecture engineering



MISCELLANEOUS CONTRACT REQUIREMENTS

BUILDING PERMITTING & IMPACT/CONCURRENCY FEES

- THE CONTRACTOR SHALL BE RESPONSIBLE FOR ADMINISTERING ALL REQUIRED BUILDING & CONSTRUCTION PERMITTING APPLICATIONS WITH THE CITY.
- THE CONTRACTOR, WILL BE FINANCIALLY RESPONSIBLE FOR THE COST OF ALL REQUIRED PERMITS AND IMPACT/CONCURRENCY FEES WITH THE CITY.
- CONTRACTOR MUST OBTAIN A TRAILER FOR A FIELD OFFICE IF REQUIRED.

PASSERO
architecture engineering



CLARIFICATIONS & INTERPRETATIONS

A BIDDER REQUIRING A CLARIFICATION OR INTERPRETATION OF THE PROJECT DOCUMENTS SHALL MAKE A WRITTEN REQUEST TO THE PROJECT MANAGER BY EMAIL AT THE FOLLOWING APPLICABLE ADDRESS:

EMAIL ADDRESS: skushner@passero.com

PHONE INQUIRIES CAN BE DIRECTED TO STEVEN KUSHNER AT **585-760-8561** (QUESTIONS WILL STILL BE REQUIRED IN WRITING)

DEADLINE FOR SUBMISSION OF QUESTIONS IS **February 27, 2025, by 5:00 PM**

PASSERO
architecture engineering



CLARIFICATIONS & INTERPRETATIONS

ALL WRITTEN REQUESTS RECEIVED BY THE ABOVE LISTED DATE SHALL BE RESPONDED TO, & THE REPOSENSE SHALL BECOME PART OF THE CONTRACT DOCUMENTS.

PLEASE NOTE THAT ANY VERBAL RESPONSE TO QUESTIONS BY THE ARCHITECT/ENGINEER IS CONSIDERED UNOFFICIAL AND WILL NOT BECOME PART OF THE CONTRACT DOCUMENTS; THEREFORE, PLEASE SUBMIT ALL CONTRACT QUESTIONS IN WRITING REGARDLESS OF ANY VERBAL COMMUNICATION.

WRITTEN QUESTIONS/COMMENTS RECEIVED DURING THIS MEETING SHALL BE RECORDED AND OFFICIAL RESPONSES SHALL BE INCLUDED IN ADDENDUM NO. 1.

PASSERO
architecture engineering



CLARIFICATIONS & INTERPRETATIONS

DURING THE BIDDERS' REVIEW OF THE CONTRACT DOCUMENTS, ANY PROBLEMS RELATED TO THE FOLLOWING QUESTIONS SHOULD BE IMMEDIATELY BROUGHT TO THE ATTENTION OF THE ARCHITECT/ENGINEER.

- **DID YOU DISCOVER ANY DISCREPANCIES BETWEEN THE PLANS & SPECIFICATIONS?**
- **ARE ALL ITEMS OF WORK AND REQUIRED TASKS TO COMPLETE THE JOB DESCRIBED ADEQUATELY IN THE CONTRACT DOCUMENTS?**
- **ARE THERE ANY ITEM(S) REQUIRED TO COMPLETE THE JOB THAT WAS NOT IDENTIFIED IN THE BID FORMS?**

PLEASE SUBMIT ANY SUCH ITEMS IN WRITING AS PREVIOUSLY DESCRIBED.

PASSERO
architecture engineering



CONTRACTOR QUESTIONS

QUESTIONS TO BE GIVEN TO STEVE KUSHNER FOLLOWING THE MEETING.
ALL QUESTIONS WILL BE ANSWERED IN AN ADDENDUM.



QUESTIONS & COMMENTS



SITE VISITS CAN BE ARRANGED THROUGH STEVE KUSHNER
skushner@passero.com

PASSERO
architecture engineering

